



Rogue River Organics

Sample 150-061824-408

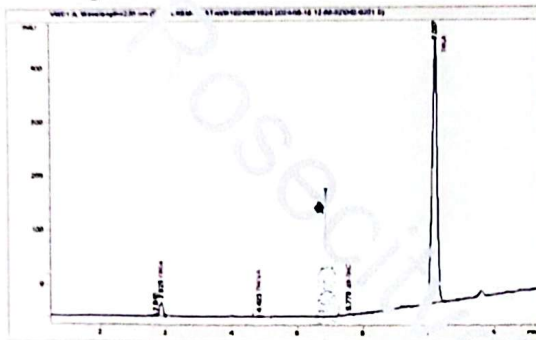
Dante's Inferno

Sample Submitted: 06-18-2024; Report Date: 06-18-2024

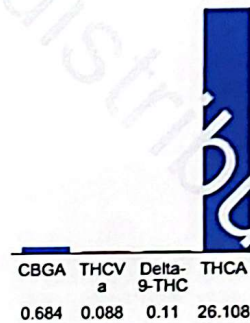
## Dante's Inferno

Plant Material: Infused Flower

### Chromatogram



### Cannabinoid Profile



### Cannabinoid Profile by HPLC

**0.11%**  
Delta-9-THC

**0.00%**  
CBD

**26.99%**  
Total Cannabinoids

Cannabinoid	% wt	mg/g
CBGA	0.684	6.84
THCVa	0.088	0.88
Delta-9-THC	0.11	1.1
THCA	26.11	261.08
<b>Total Cannabinoids</b>	<b>26.99</b>	<b>269.9</b>
<b>Calculated Total THC</b>	<b>23.01</b>	<b>230.07</b>
<b>Calculated CBD Yield</b>	<b>0.00</b>	<b>0.00</b>
Calculated Total THC = Delta-9-THC + 0.877 * THCA		
Calculated Maximum CBD Yield = CBD + 0.8 * CBDA		

**Marin Analytics, LLC**  
250 Bel Marin Keys Blvd, Suite D4  
Novato, CA 94949

833-321-TEST / info@marinanalytics.com

**Mike Clemmons**  
Lab Manager

This sample has been tested by Marin Analytics, LLC using valid testing methodologies and a quality system. Values reported relate only to the sample tested. Marin Analytics, LLC makes no claims as to the efficacy, safety, or other risks associated with any detected or non-detected levels of any compounds reported herein. This Certificate shall not be reproduced except in full without the written approval of Marin Analytics, LLC. Copyright © 2023 Marin Analytics, LLC All Rights Reserved.